

OE60M/30M Series Underwater Optical-Electrical Connectors (Fiber Ferrule Easy-Maintenance Type)

Key Features

- Standard 2.5mm fiber ferrule
- Plug ferrule end-face flush with mounting surface for easy cleaning/maintenance
- Fiber alignment sleeve located on socket side, detachable and replaceable
- Socket ferrule designed for easy maintenance

Performance Parameters

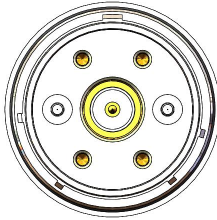


- ✧ Contact Pins: 7–11 cores
- ✧ Contact Resistance: <math><10\text{ m}\Omega</math>
- ✧ Insulation Resistance:
- ✧ Normal condition: >2000 M Ω
- ✧ Environmental test: >1000 M Ω
- ✧ Dielectric Strength: $\leq 2000\text{V/DC}$, 1 min
- ✧ Single-Core Current Rating: $\leq 40\text{A}$
- ✧ Insertion Loss:
- ✧ 1310 nm: 1.2 dB standard / 0.3 dB low loss
- ✧ 1550 nm: 1.0 dB standard / 0.25 dB low loss
- ✧ Mechanical Life:
- ✧ Connector: >500 cycles
- ✧ Sealing ring: 100 cycles
- ✧ Factory Test Pressure:
- ✧ Standard lateral pressure: 30 MPa
- ✧ Customizable up to 60 MPa lateral pressure
- ✧ Socket with longitudinal waterproof function
- ✧ Operating Temperature: -45°C to 90°C

Material Properties

- Connector Housing: Standard stainless steel 316L (customizable to titanium alloy TC4)
- Optical Contacts: Zirconia ceramic ferrule
- Electrical Contacts: Gold-plated brass
- Sealing End Cap: Stainless steel 316L
- Cable: Polyurethane or rubber-sheathed cable

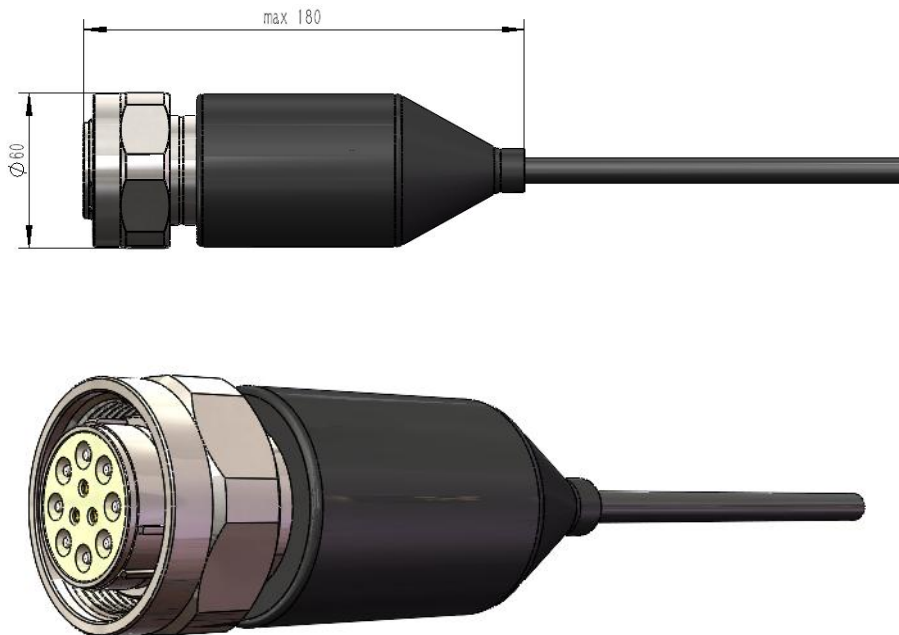


Connector Arrangement

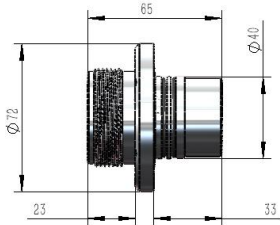
 <p>Configuration: 2 optical + 5 electrical + 1 RF core Current Rating per Core: 20A Operating Voltage: 500V DC/AC rms Dielectric Strength: 1000V DC Insertion Loss: $\leq 1.0\text{dB}$ @1550nm</p>	 <p>Configuration: 5 optical + 4 electrical cores Current Rating per Core: 20A Operating Voltage: 500V DC/AC rms Dielectric Strength: 1000V DC Insertion Loss: $\leq 1.0\text{dB}$ @1550nm</p>	 <p>Configuration: 8 optical + 3 electrical cores Current Rating (per core): 20A Operating Voltage: 500V DC/AC RMS Dielectric Withstanding Voltage: 1000V DC Insertion Loss (1550nm): $\leq 1.0\text{dB}$</p>
---	---	--

Connector Appearance

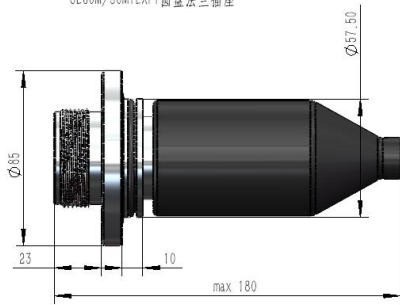
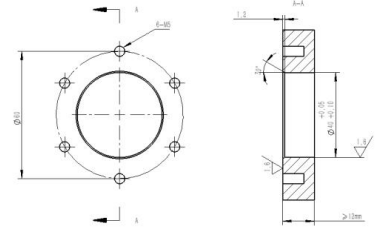
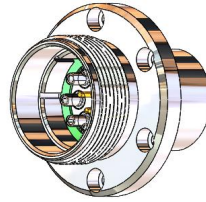
Plug Designs:



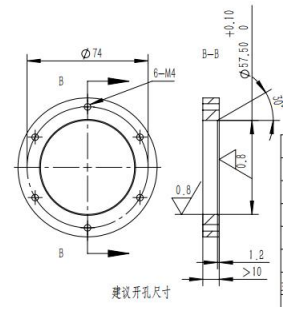
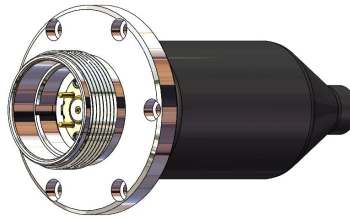
Socket Designs:



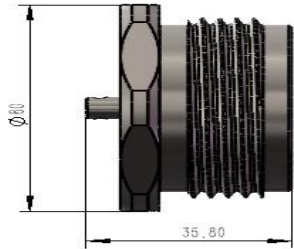
OE60M/30MYEXFY 圆盖法兰插座



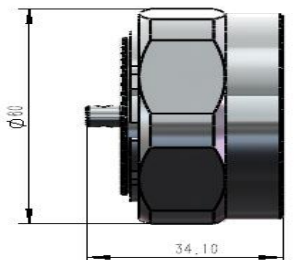
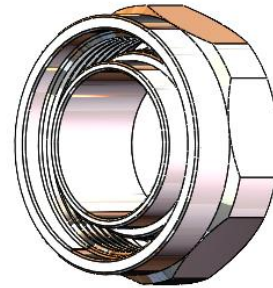
OE60M/30MJEXFY 圆盖法兰浮动式插座



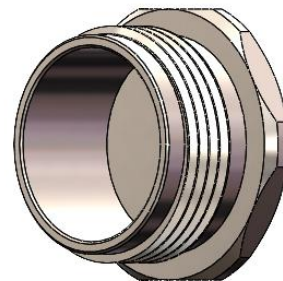
Sealing Cap Designs:



OE60M/30M-T型插头密封帽



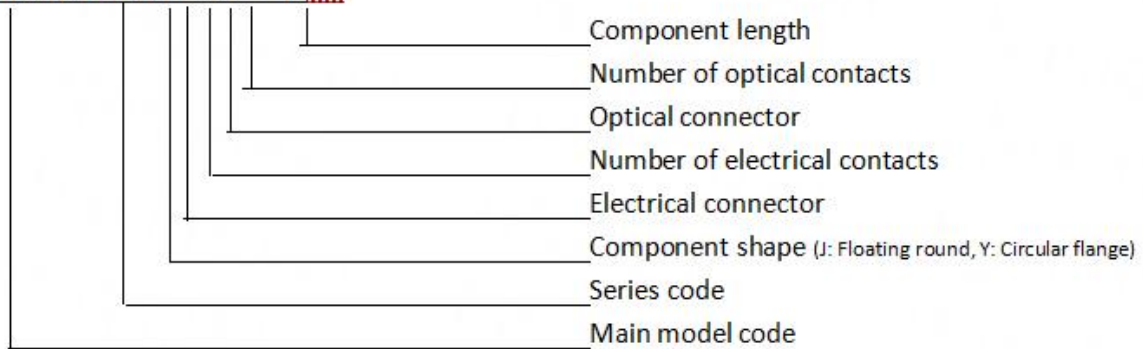
OE60M/30M-T型插座密封帽



Model Number Explanation

Socket Model

OE60M / 30MYEXFY - L Xm



Plug Model

OE60M/30MT EXFY - L Xm

